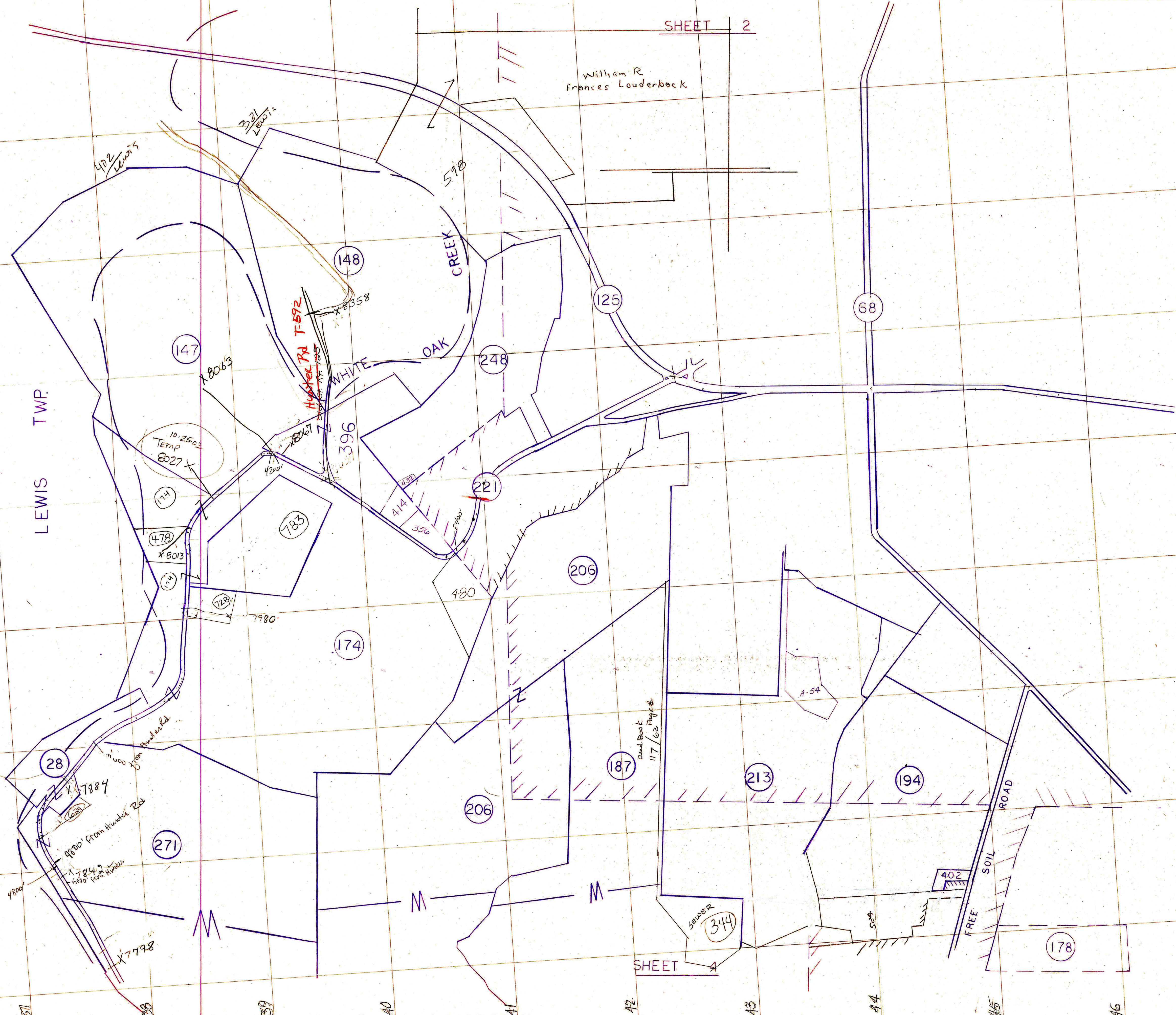


William R
Frances Louderback

LEWIS TWP.



178

125

68

148

147

248

221

206

174

206

187

213

194

271

28

344

396

174

478

783

480

WHITE OAK

598

402

321

784

7842

7998

Temp 10.2502 8027

8358

8013

7980

4800

6000

A-54

402

524

44

FREE SOIL ROAD

SEWER

SEWER

DEAD END 117/63

42

43

44

45

46

47